

**Metabolic Endocrine Education Foundation
18372 Clark Street # 212 Tarzana, CA 91356**

NONPROFIT
ORG
US POSTAGE PAID
VAN NUYS, CA
PERMIT # 659

Register online: www.WCIR.org/CMEdinner
Please choose CME Dinner Symposium from the Menu

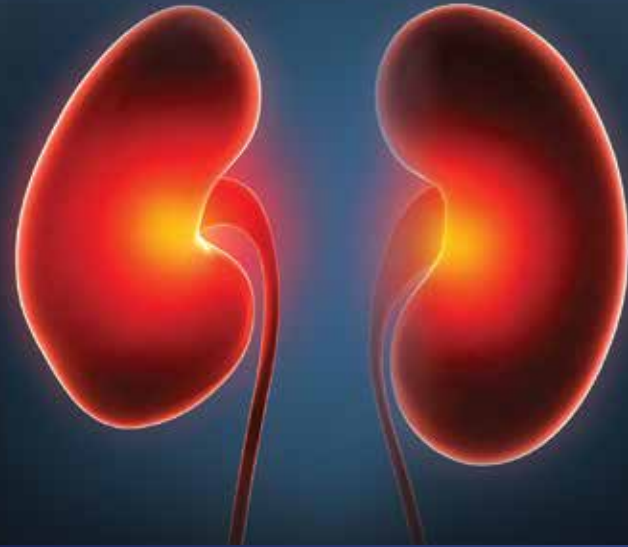
CME Symposium
IN ASSOCIATION WITH THE
FREE LIVE-IN-PERSON ONLINE

20th
hybrid
WCIRDC

EARN
CME
ABIM-MOC
CREDITS
1.50

New Horizon in the Management of Diabetes Kidney Disease

Friday December 2, 2022
6:00 pm – 7:30 pm PST
Hilton Universal City Hotel
Los Angeles, California
DINNER WILL BE SERVED



This is a CME Symposium Supported by an Educational Grant from **Bayer**
Free for all 20th WCIRDC Attendees | Register Online: wcir.org/registration
This CME Symposium will be available and FREE for ONE year following the meeting.

Provided By:



Administered By:





New Horizon in the Management of Diabetes Kidney Disease

CHAIRS: Matthew Weir, MD • Yehuda Handelsman, MD

- 6:00pm – 6:10pm Introduction & Pre CME Questions
Yehuda Handelsman, MD
- 6:10pm – 6:25pm CKD in Diabetes-Prevalence, Pathophysiology Impact on Cardiometabolic Diseases
Erin Michos, MD
- 6:25 pm – 6:45pm Diagnosing DKD- screening, methodology role of Guidelines
Matthew Weir, MD
- 6:45pm 7:05pm New Treatment Paradigm of DKD the Role of Non-Steroidal MRA
Peter Rossing, MD, DMSc
- 7:05pm – 7:30pm **Q&A Panel Discussion:** The Future is Here- Management of DKD
Panel: Erin Michos, MD • Peter Rossing, MD, DMSc • Matthew Weir, MD
Moderator: Yehuda Handelsman, MD
- 7:30pm Adjourn

Program Description

Diabetes along with HTN is the main cause of CKD as well as of HF and ASCVD. DKD is the leading cause of end-stage renal disease (ESRD) and accounts for near 30% of direct medical costs for diabetes-related conditions. Until recently the management of CKD has been based on controlling HTN, hyperglycemia, lipids and blocking RAAS with ACE inhibitors or ARB. Still, being able to improve diabetes kidney disease has been suboptimal. Patients are often diagnosed late or not at all hence are provided with deficient management plan. In addition, recent CVOTs introduced newer medications like SGLT2i a non-steroidal MRA demonstrating an impact on CKD HF and ASCVD. Addressing physicians' gaps of knowledge, in this CME symposium we will explore the impact of the prevalence, and pathophysiology of CKD on Cardiometabolic Diseases, highlight the contemporary approach to diagnosis and management of these complex patients with a focus on emerging treatments specifically on finerenone a nonsteroidal MRA, which is largely unknown to clinicians.

Learning Objectives

Upon completion of this symposium, participants should be able to:

- Discuss DKD epidemiology and pathophysiologic interactions with diabetes, and cardiometabolic diseases
- Discuss the current standards and timing of screening and diagnosing CKD in diabetes
- Compare and contrast the benefits and limitations of accepted treatments for CKD management, including RAAS blockade agents, first generation MRAs, and SGLT2 inhibitors
- Evaluate the clinical outcomes of FIDELIO and FIGARO and implication on the role of nonsteroidal MRAs specifically finerenone in the optimal therapeutic regimens for the management of DKD

Target Audience

This educational initiative is designed for endocrinologists, cardiologists, nephrologists, primary care physicians, internists, and other healthcare professionals interested in the Epidemiology, pathophysiology, prevention, and treatment of diabetes with CKD and prevention of related morbidity and mortality.

FACULTY



Yehuda Handelsman, MD
FACP, FNLA, MACE, Chair
Chair & Program Director, WCIRDC
Medical Director & Principal Investigator
Metabolic Institute of America
Chair & Founder
International Committee for Insulin Resistance
Chair & Founder, International Lipid Forum
Tarzana, California



Erin D. Michos, MD
MHS, FAHA, FACC, FASE, FASPC
Associate Professor of Medicine (Cardiology)
and Epidemiology
Associate Director of Preventive Cardiology
Johns Hopkins University School of Medicine
Baltimore, Maryland



Matthew R. Weir, MD, Chair
Professor and Chief
Division of Nephrology
Department of Medicine
University of Maryland School of Medicine
Baltimore, Maryland



Peter Rossing, MD, DMSc
Professor Department of Clinical Medicine
University of Copenhagen
Steno Diabetes Center Copenhagen
Herlev, Denmark

CME Dinner Symposium

This CME Symposium will be available and FREE for ONE year following the meeting.

Learn more: WCIR.ORG/CMESymposium

This CME Supported Symposium is included with the 20th WCIRDC Live Interactive Online Registration. To register for the entire 20th WCIRDC FREE

Please visit wcir.org/registration

This activity has been planned and implemented in accordance with the Essential Areas and Policies of the Accreditation Council for Continuing Medical Education (ACCME) through the joint providership of PESI Inc., and Metabolic Endocrine Education Foundation (MEEF). PESI Inc. is accredited by the ACCME to provide continuing medical education for physicians. PESI, Inc. designated this live educational activity for a maximum of 1.50 AMA PRA Category 1 Credit(s). Physicians should only claim credit commensurate with the extent of their participation in the activity.

For information please contact: info@tmioa.com or 818 342 1889

This is a CME Program Supported by an Educational Grant from Bayer

For information please contact: info@tmioa.com or **818.342.1889**

This is a CME Program Supported by an Educational Grant from **Bayer**